

another decision document

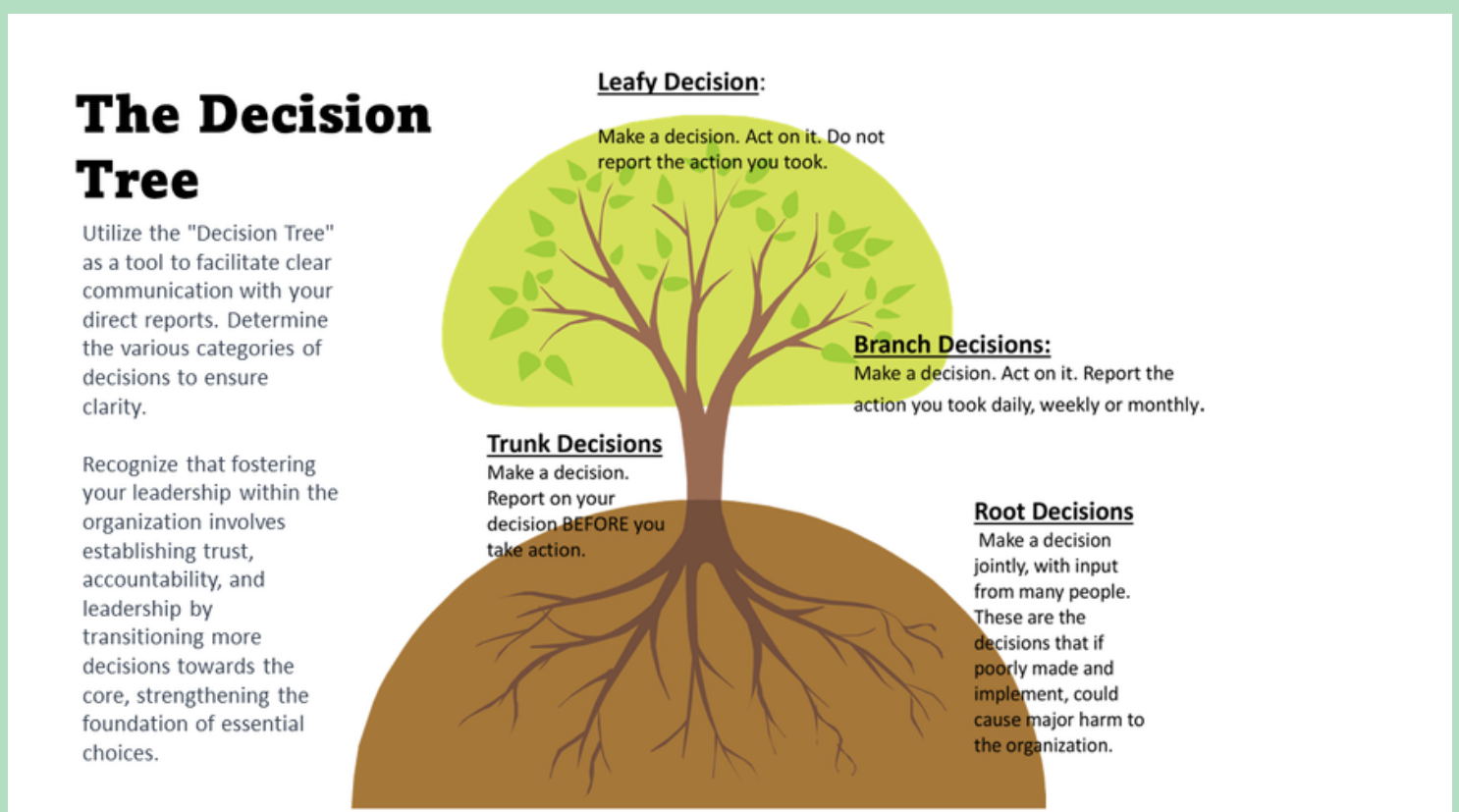
The Decision Tree
WWW.LEADINGABETTERWAY.COM

Welcome to the latest edition of our "Decision Documents" series! This month, we want to highlight a powerful tool that every leader should have in their arsenal: the Decision Tree.

In this edition, we break down the Decision Tree into its crucial components:

- **Leaf Decisions:** Make the decision, act on it, and no need to inform anyone.
- **Branch Decisions:** Make the decision, act on it, and report regularly (weekly, monthly, or as decided).
- **Trunk Decisions:** Make the decision and report before taking action.
- **ROOT Decisions:** Joint decision-making and input are crucial to safeguard the organization from potential harm.

Let the Decision Tree be your guide when you navigate the intricate terrain of leadership choices in our pursuit of organizational excellence.



www.LeadingABetterWay.com www.TheLeadingHeart.com